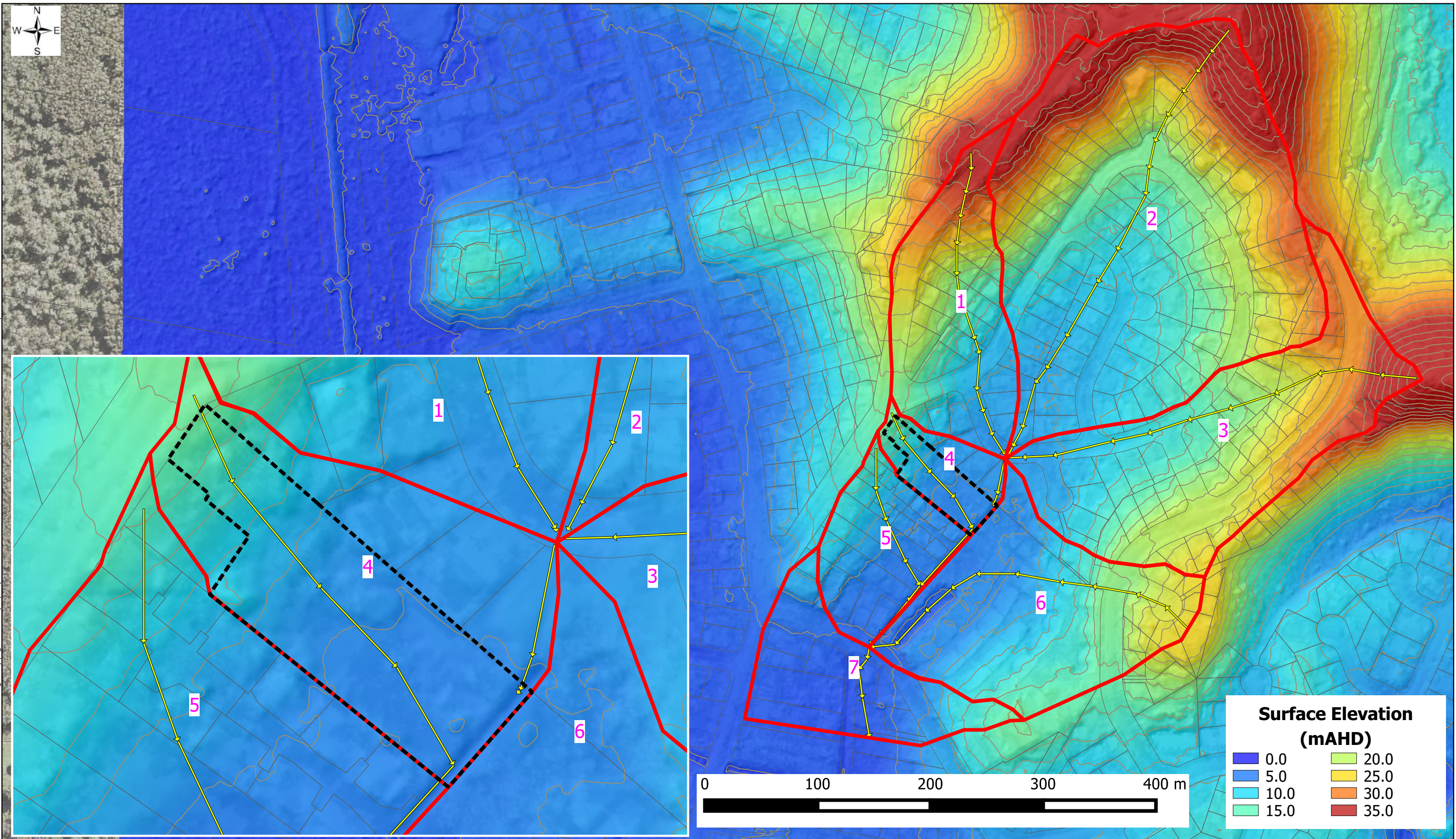


COPYRIGHT © This drawing is copyright and the property of Flood Works. It must not be retained, copied or used without the authority of Flood Works.



**FIG 01 - CATCHMENT PLAN**

PROJECTION: GDA94 / MGA ZONE 56  
PROJECT: 103 Patterson St Byron Bay  
DATE: Jun 2020

**Legend**

- Site
- Sub\_Catchment
- Cadastral
- Flowpath

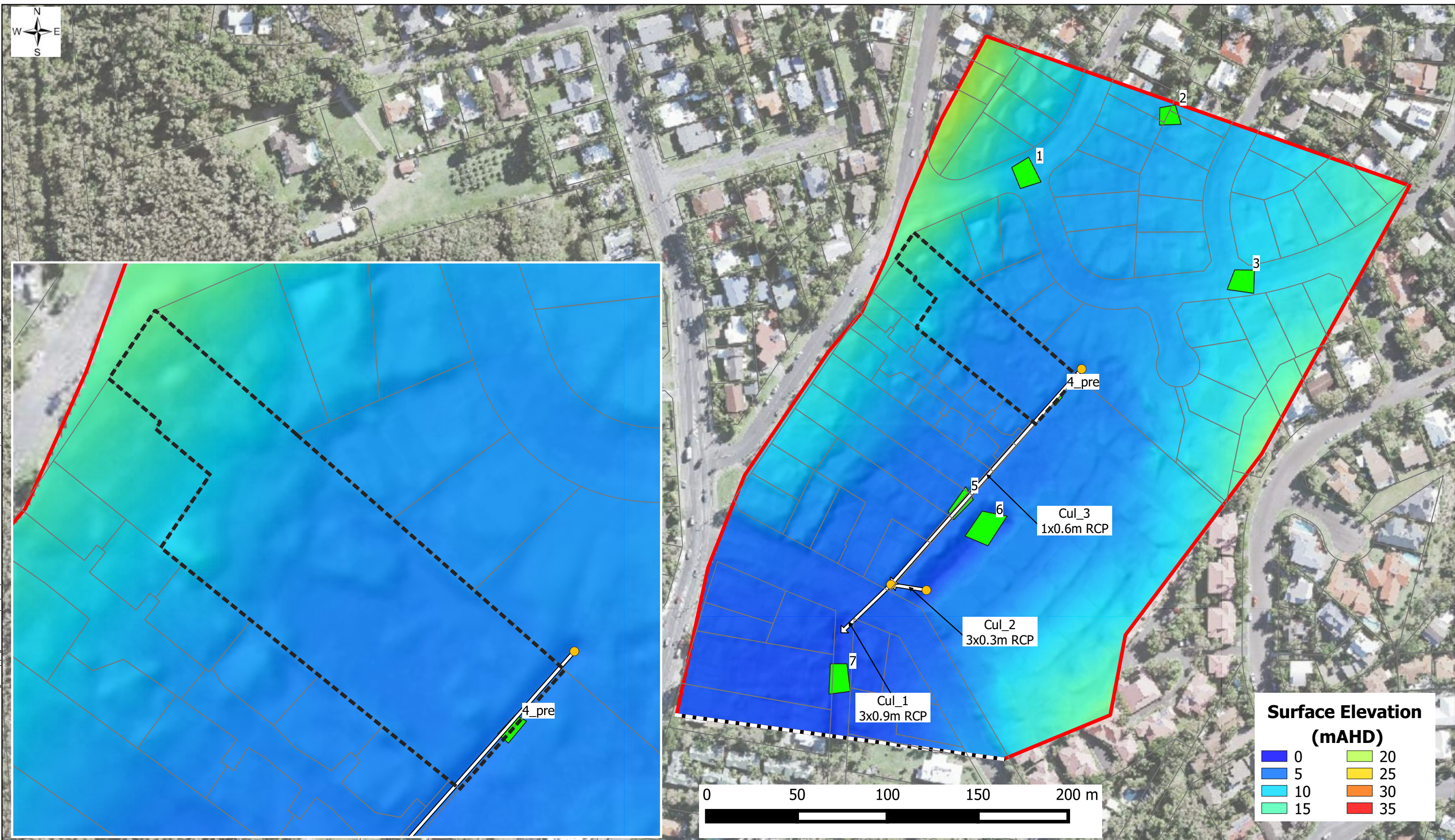
  
**FLOODWORKS**  
[www.floodworks.com.au](http://www.floodworks.com.au)

Client

**DISCLAIMER:** This figure and its contents are electronically generated, are confidential and may only be used for the purpose for which they were intended. Flood Works will not accept responsibility for any consequences arising from the use of the figure for other than its intended purpose or where the drawing has been altered, amended or changed either manually or electronically by any third party.



COPYRIGHT © This drawing is copyright and the property of Flood Works. It must not be retained, copied or used without the authority of Flood Works.



**FIG 02 - PRE-DEVELOPMENT  
TUFLOW MODEL FEATURE**

PROJECTION: GDA94 / MGA ZONE 56  
PROJECT: 103 Patterson St Byron Bay  
DATE: Feb 2021

**Legend**

Model Extent

Cadastral

Site

Downstream Boundary

Pipe

Pit

Inflow Location

**DISCLAIMER:** This figure and its contents are electronically generated, are confidential and may only be used for the purpose for which they were intended. Flood Works will not accept responsibility for any consequences arising from the use of the figure for other than its intended purpose or where the drawing has been altered, amended or changed either manually or electronically by any third party.



COPYRIGHT © This drawing is copyright and the property of Flood Works. It must not be retained, copied or used without the authority of Flood Works.



**FIG 03 - PRE-DEVELOPMENT  
TUFLOW MANNING MAP**

PROJECTION: GDA94 / MGA ZONE 56  
PROJECT: 103 Patterson St Byron Bay  
DATE: Feb 2021

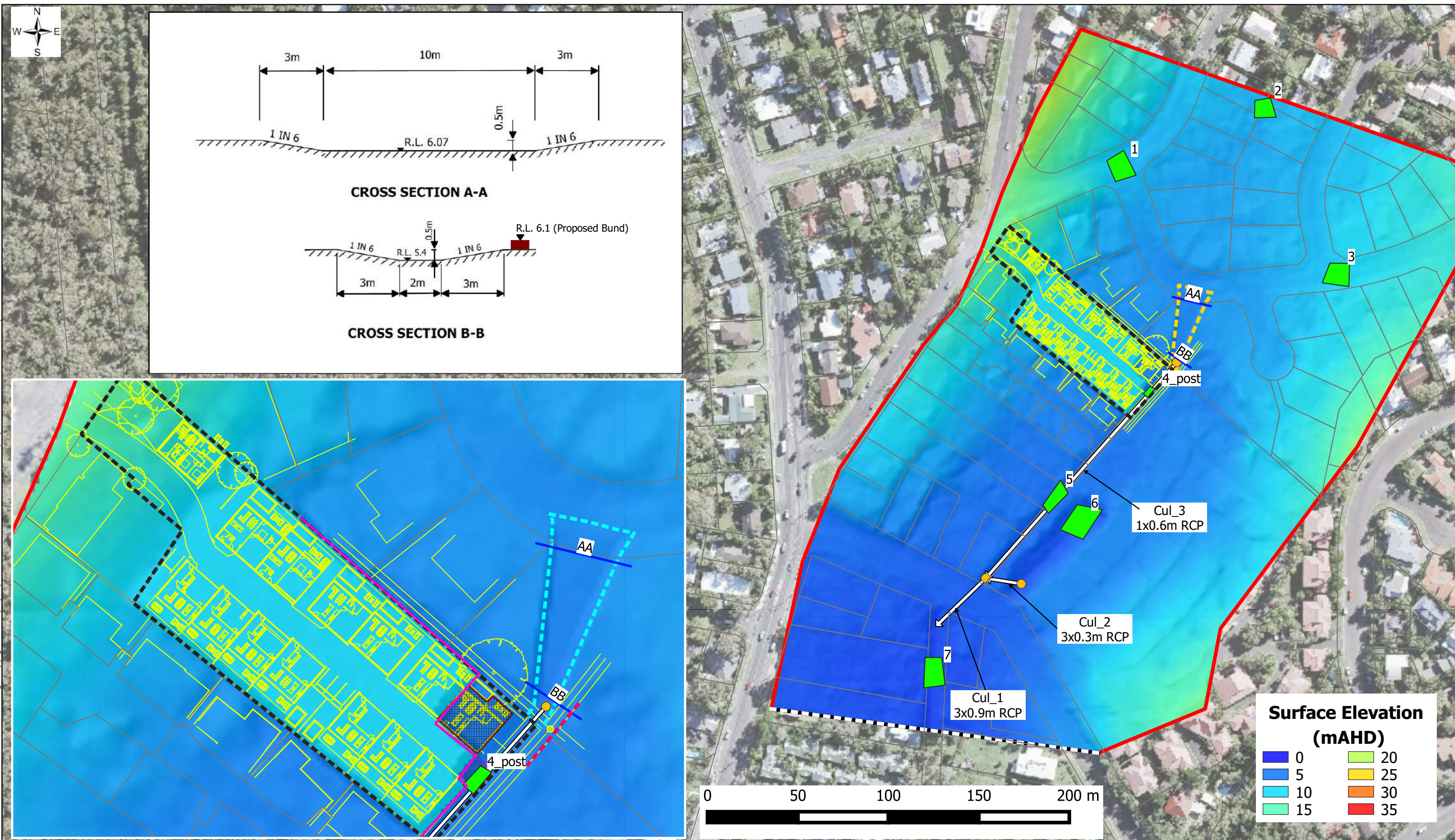
**Legend**

- Model Extent
- Downstream Boundary
- Site
- Cadastral

**DISCLAIMER:** This figure and its contents are electronically generated, are confidential and may only be used for the purpose for which they were intended. Flood Works will not accept responsibility for any consequences arising from the use of the figure for other than its intended purpose or where the drawing has been altered, amended or changed either manually or electronically by any third party.



COPYRIGHT © This drawing is copyright and the property of Flood Works. It must not be retained, copied or used without the authority of Flood Works.



**FIG 04 - POST-DEVELOPMENT TUFLOW MODEL FEATURE**

PROJECTION: GDA94 / MGA ZONE 56  
PROJECT: 103 Patterson St Byron Bay  
DATE: Feb 2021

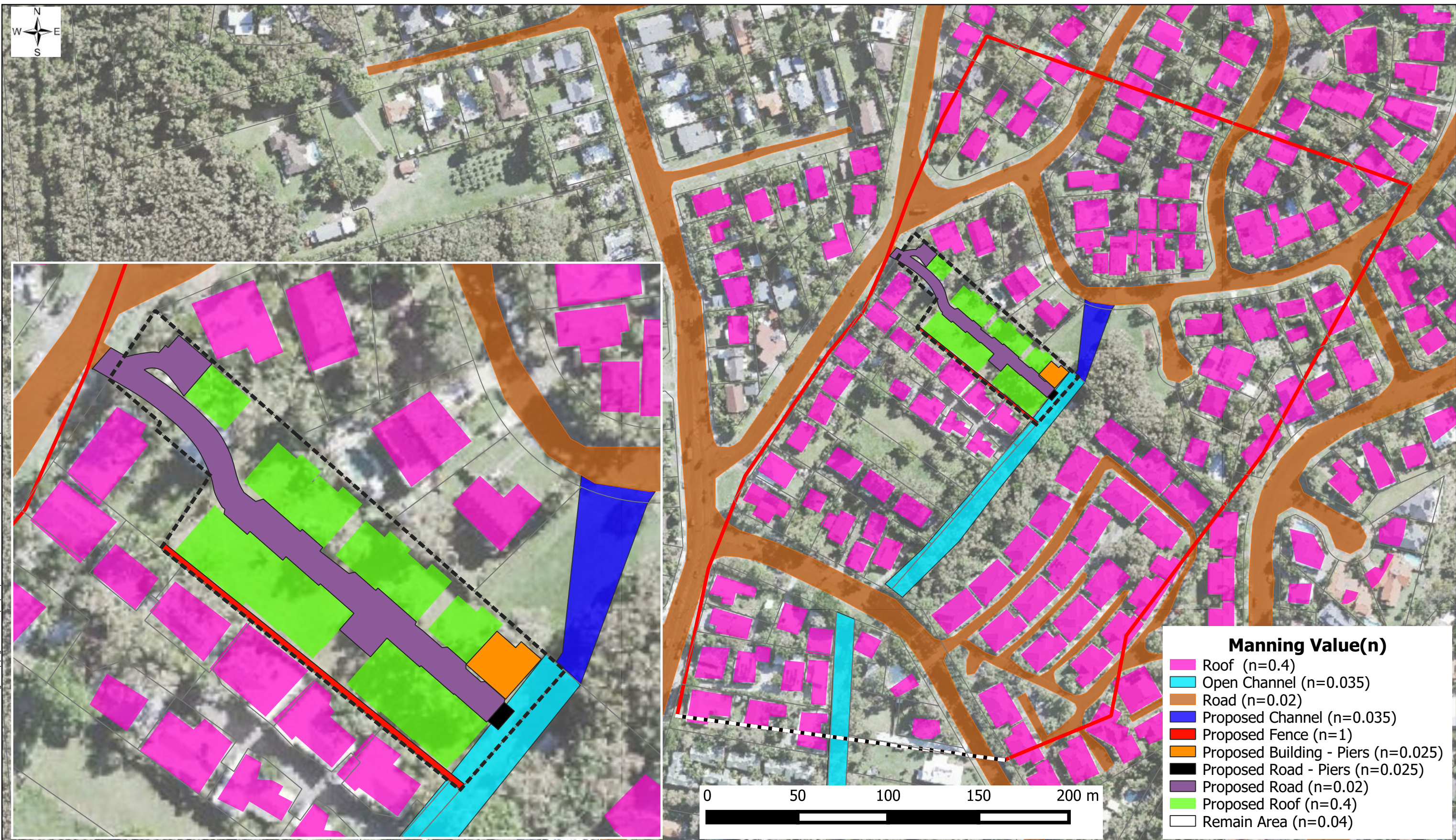
**Legend**

- Model Extent
- Cadastral
- Site
- Pipe
- Pit
- Inflow Location
- Layout
- Downstream Boundary
- Proposed Retaining Wall
- Proposed Channel
- Proposed Building - Piers
- Proposed Road - Piers
- 2d\_Zln

**DISCLAIMER:** This figure and its contents are electronically generated, are confidential and may only be used for the purpose for which they were intended. Flood Works will not accept responsibility for any consequences arising from the use of the figure for other than its intended purpose or where the drawing has been altered, amended or changed either manually or electronically by any third party.



COPYRIGHT © This drawing is copyright and the property of Flood Works. It must not be retained, copied or used without the authority of Flood Works.



**FIG 05 - POST-DEVELOPMENT  
TUFLOW MANNING MAP**

PROJECTION: GDA94 / MGA ZONE 56  
PROJECT: 103 Patterson St Byron Bay  
DATE: Feb 2021

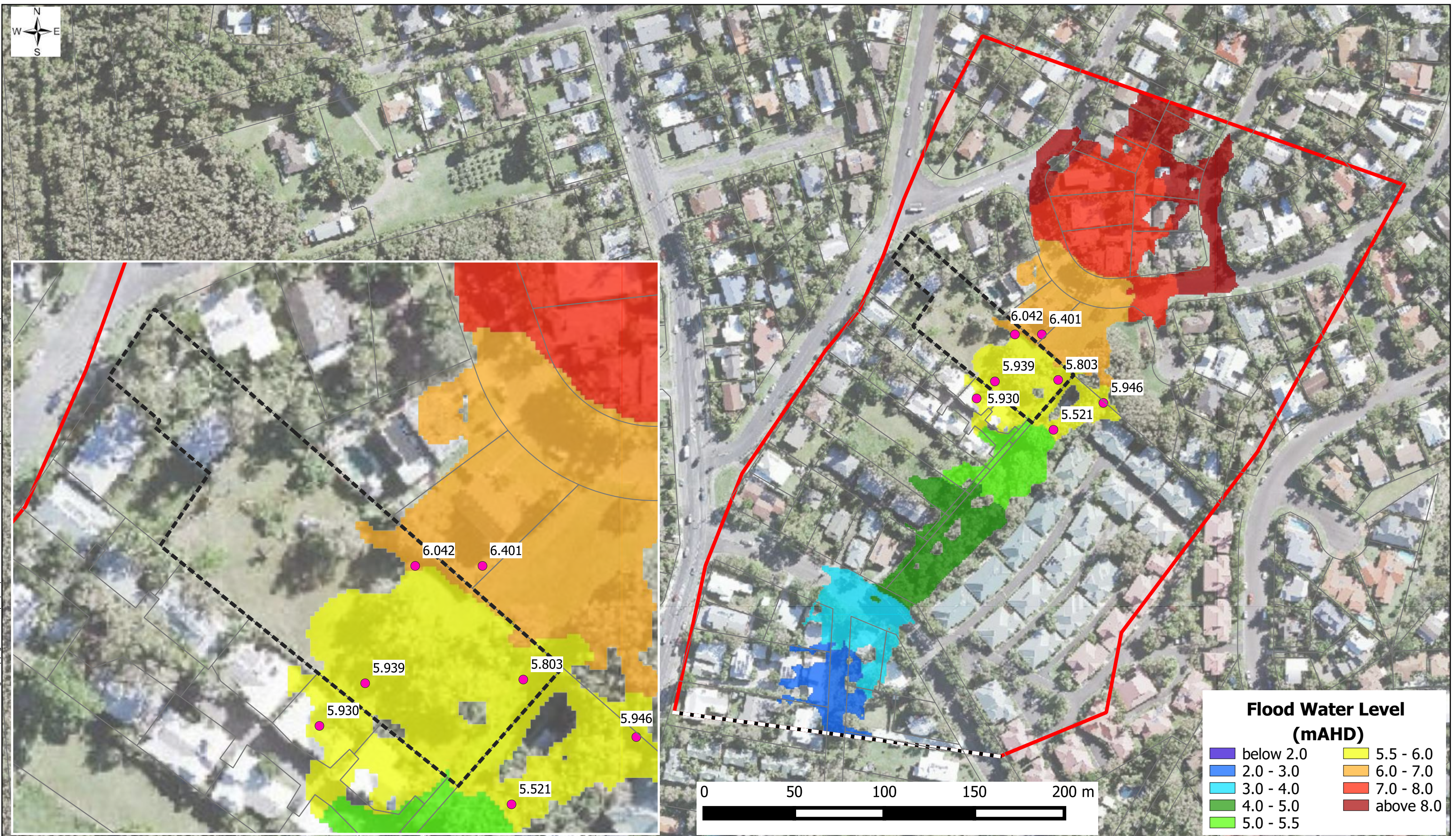
**Legend**

Model Extent Site  
Cadastral Downstream Boundary

**DISCLAIMER:** This figure and its contents are electronically generated, are confidential and may only be used for the purpose for which they were intended. Flood Works will not accept responsibility for any consequences arising from the use of the figure for other than its intended purpose or where the drawing has been altered, amended or changed either manually or electronically by any third party.



COPYRIGHT © This drawing is copyright and the property of Flood Works. It must not be retained, copied or used without the authority of Flood Works.



## FIG A01 - PRE-DEVELOPMENT 1% AEP FLOOD WATER LEVEL

PROJECTION: GDA94 / MGA ZONE 56  
PROJECT: 103 Patterson St Byron Bay  
DATE: Feb 2021

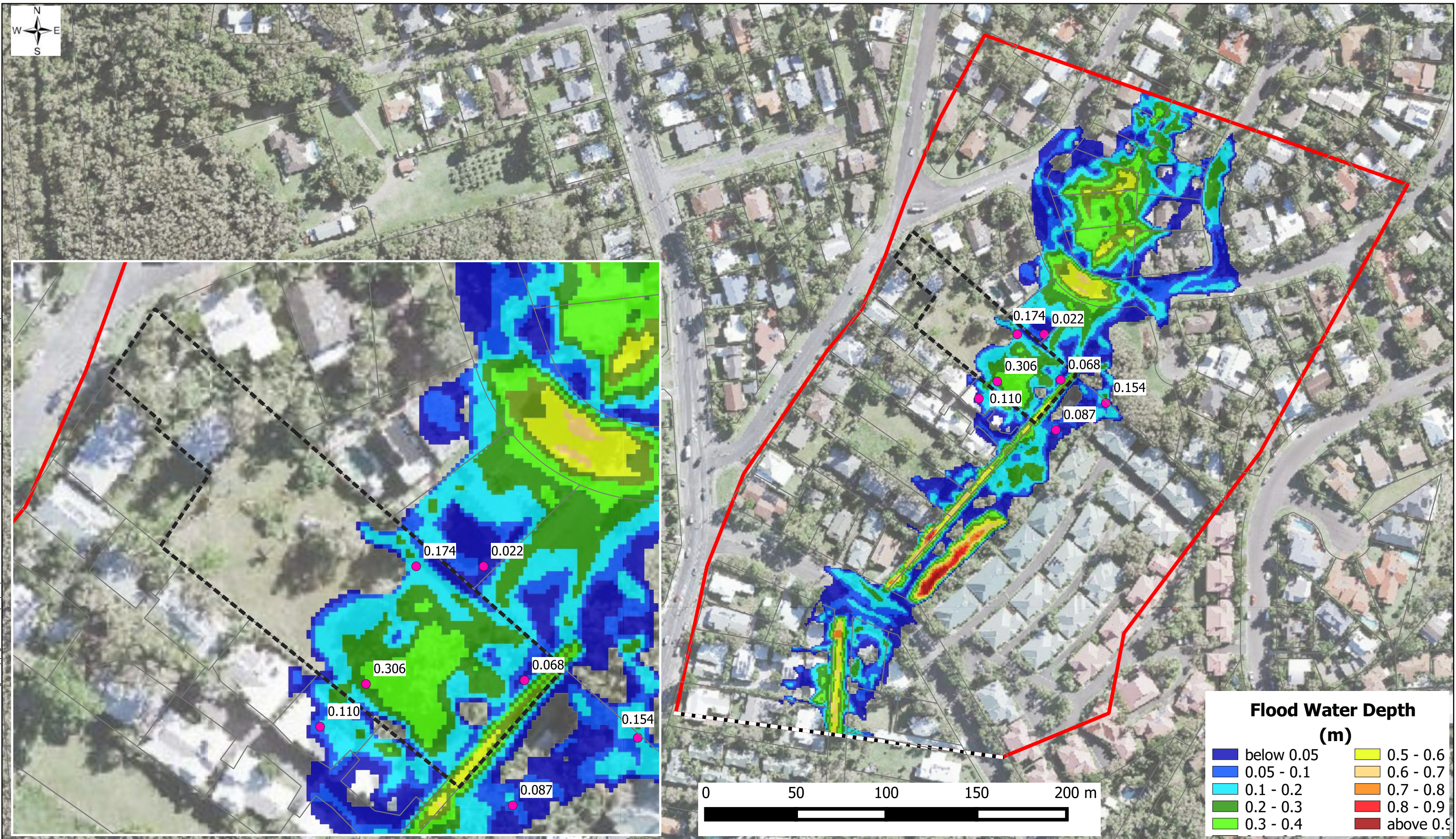
### Legend

- Model Extent
- Cadastral
- Site
- Downstream Boundary
- Interrogation Point

**DISCLAIMER:** This figure and its contents are electronically generated, are confidential and may only be used for the purpose for which they were intended. Flood Works will not accept responsibility for any consequences arising from the use of the figure for other than its intended purpose or where the drawing has been altered, amended or changed either manually or electronically by any third party.



COPYRIGHT © This drawing is copyright and the property of Flood Works. It must not be retained, copied or used without the authority of Flood Works.



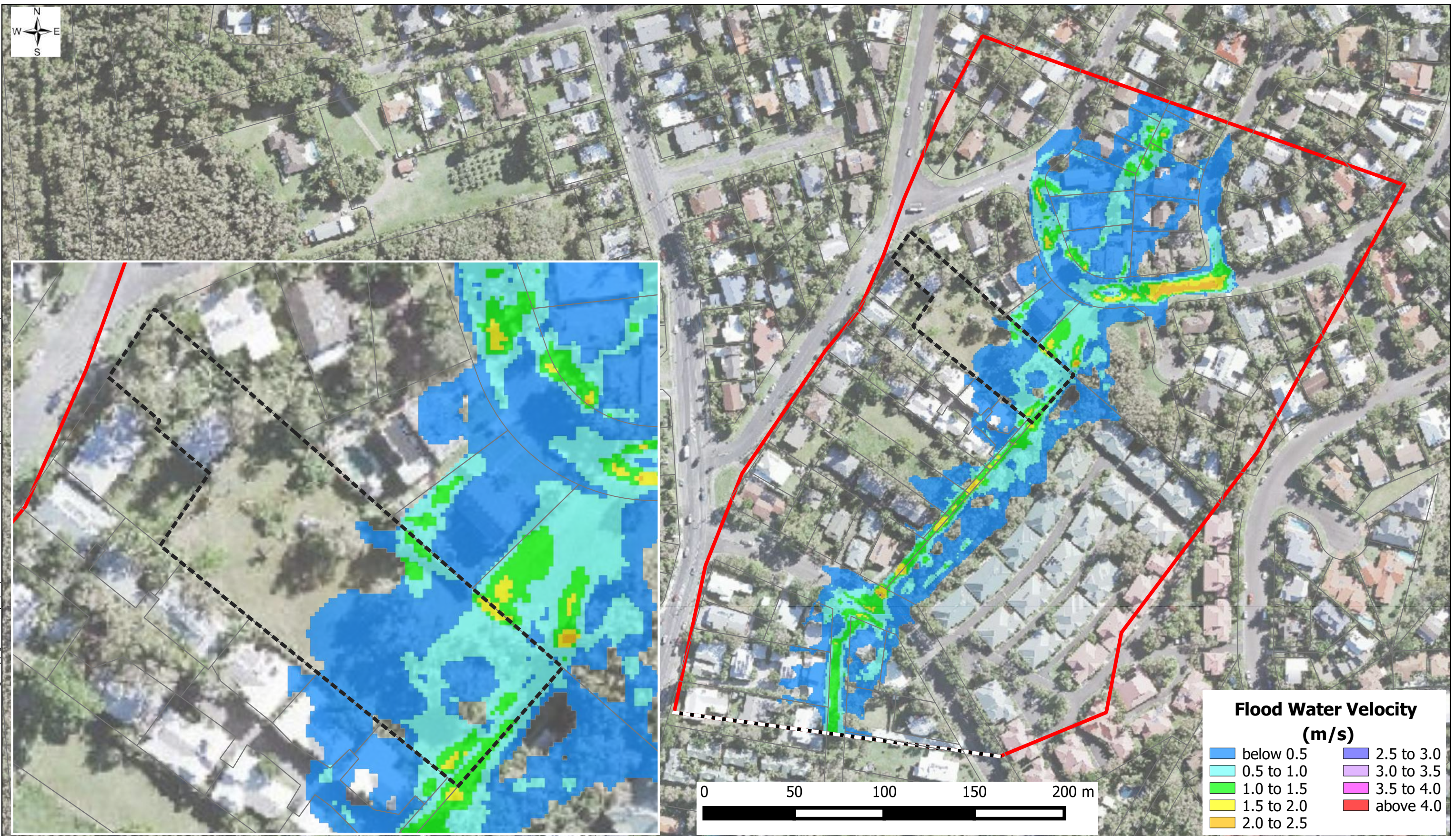
**FIG A02 - PRE-DEVELOPMENT**  
**1% AEP**  
**FLOOD WATER DEPTH**

PROJECTION: GDA94 / MGA ZONE 56  
PROJECT: 103 Patterson St Byron Bay  
DATE: Feb 2021

**DISCLAIMER:** This figure and its contents are electronically generated, are confidential and may only be used for the purpose for which they were intended. Flood Works will not accept responsibility for any consequences arising from the use of the figure for other than its intended purpose or where the drawing has been altered, amended or changed either manually or electronically by any third party.



COPYRIGHT © This drawing is copyright and the property of Flood Works. It must not be retained, copied or used without the authority of Flood Works.



**FIG A03 - PRE-DEVELOPMENT  
1% AEP  
FLOOD WATER VELOCITY**

PROJECTION: GDA94 / MGA ZONE 56  
PROJECT: 103 Patterson St Byron Bay  
DATE: Feb 2021

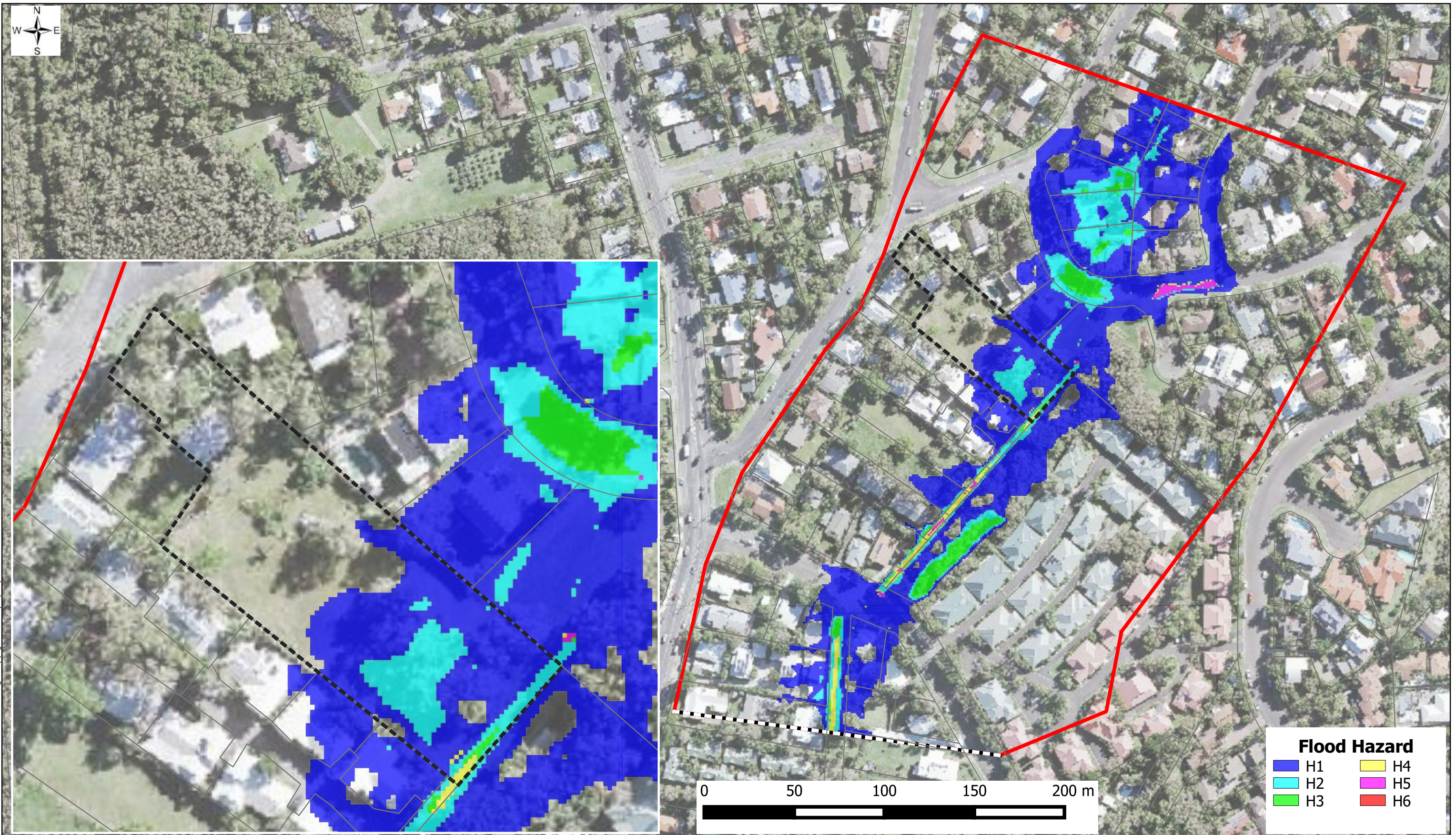
**Legend**

Model Extent Site  
 Cadastral Downstream Boundary

**DISCLAIMER:** This figure and its contents are electronically generated, are confidential and may only be used for the purpose for which they were intended. Flood Works will not accept responsibility for any consequences arising from the use of the figure for other than its intended purpose or where the drawing has been altered, amended or changed either manually or electronically by any third party.



COPYRIGHT © This drawing is copyright and the property of Flood Works. It must not be retained, copied or used without the authority of Flood Works.



**FIG A04 - PRE-DEVELOPMENT  
1% AEP  
FLOOD WATER HAZARD**

PROJECTION: GDA94 / MGA ZONE 56  
PROJECT: 103 Patterson St Byron Bay  
DATE: Feb 2021

**Legend**

- Model Extent    Site  
 Cadastral    Downstream Boundary

**DISCLAIMER:** This figure and its contents are electronically generated, are confidential and may only be used for the purpose for which they were intended. Flood Works will not accept responsibility for any consequences arising from the use of the figure for other than its intended purpose or where the drawing has been altered, amended or changed either manually or electronically by any third party.



COPYRIGHT © This drawing is copyright and the property of Flood Works. It must not be retained, copied or used without the authority of Flood Works.



## FIG B01 - POST-DEVELOPMENT 1% AEP FLOOD WATER LEVEL

PROJECTION: GDA94 / MGA ZONE 56  
PROJECT: 103 Patterson St Byron Bay  
DATE: Feb 2021

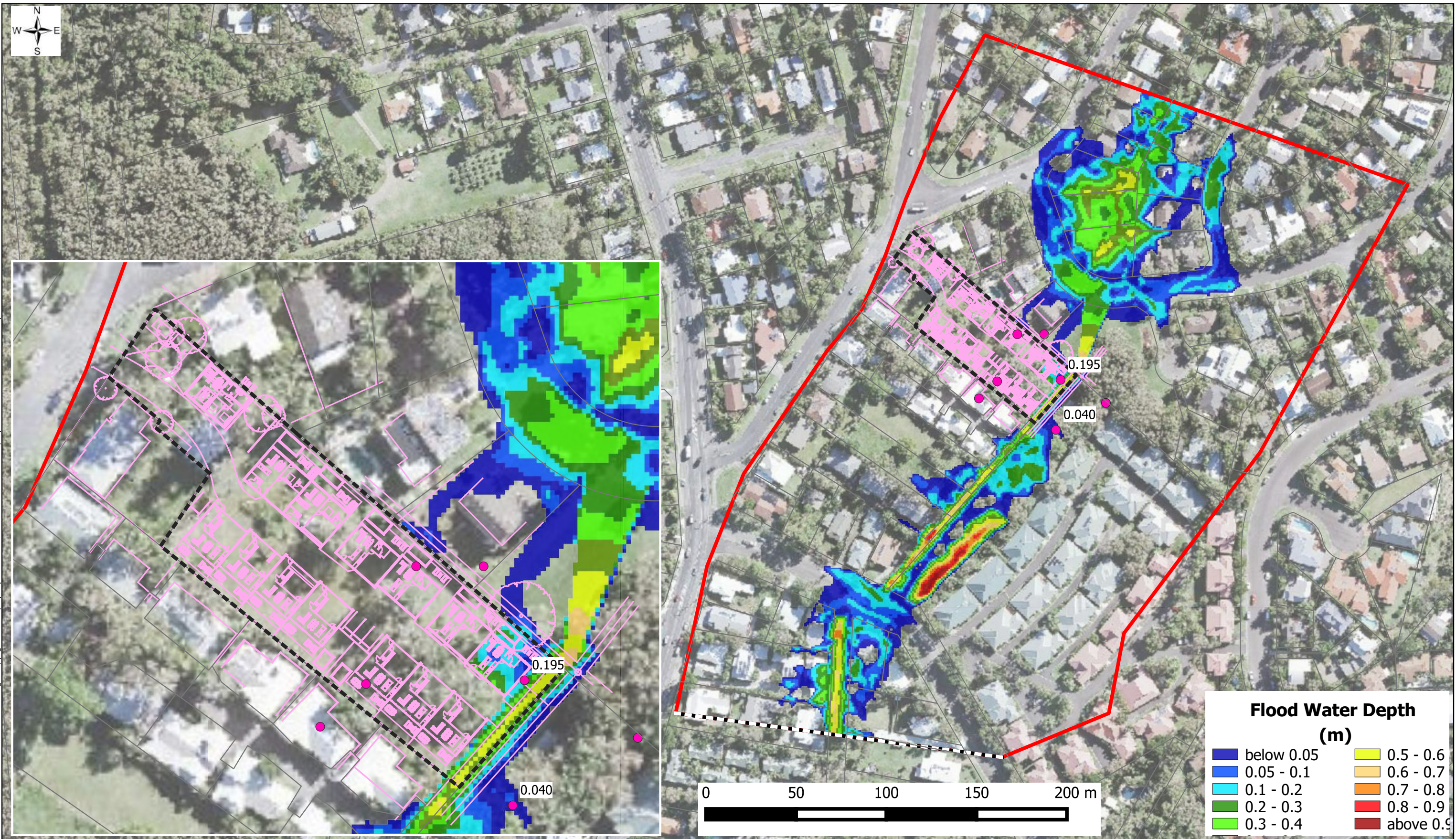
### Legend

- Model Extent
- Cadastral
- Site
- Downstream Boundary
- Interrogation Point
- Layout

**DISCLAIMER:** This figure and its contents are electronically generated, are confidential and may only be used for the purpose for which they were intended. Flood Works will not accept responsibility for any consequences arising from the use of the figure for other than its intended purpose or where the drawing has been altered, amended or changed either manually or electronically by any third party.



COPYRIGHT © This drawing is copyright and the property of Flood Works. It must not be retained, copied or used without the authority of Flood Works.



**FIG B02 - POST-DEVELOPMENT  
1% AEP  
FLOOD WATER DEPTH**

PROJECTION: GDA94 / MGA ZONE 56  
PROJECT: 103 Patterson St Byron Bay  
DATE: Feb 2021

- Legend**
- Model Extent
  - Cadastral
  - Site
  - Downstream Boundary
  - Interrogation Point
  - Layout

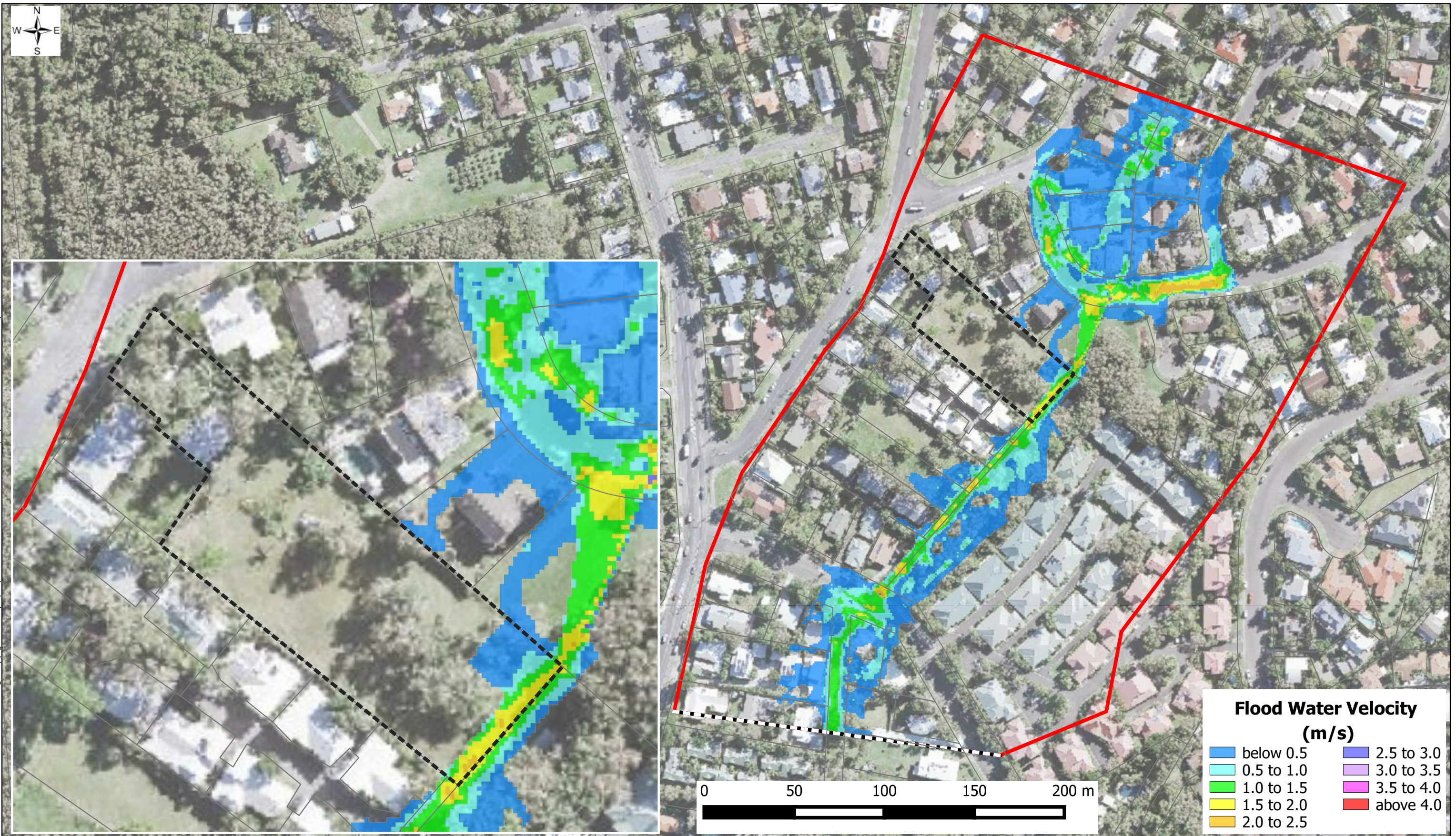


Client

**DISCLAIMER:** This figure and its contents are electronically generated, are confidential and may only be used for the purpose for which they were intended. Flood Works will not accept responsibility for any consequences arising from the use of the figure for other than its intended purpose or where the drawing has been altered, amended or changed either manually or electronically by any third party.



COPYRIGHT © This drawing is copyright and the property of Flood Works. It must not be retained, copied or used without the authority of Flood Works.



**FIG B03 - POST-DEVELOPMENT  
1% AEP  
FLOOD WATER VELOCITY**

PROJECTION: GDA94 / MGA ZONE 56  
PROJECT: 103 Patterson St Byron Bay  
DATE: Feb 2021

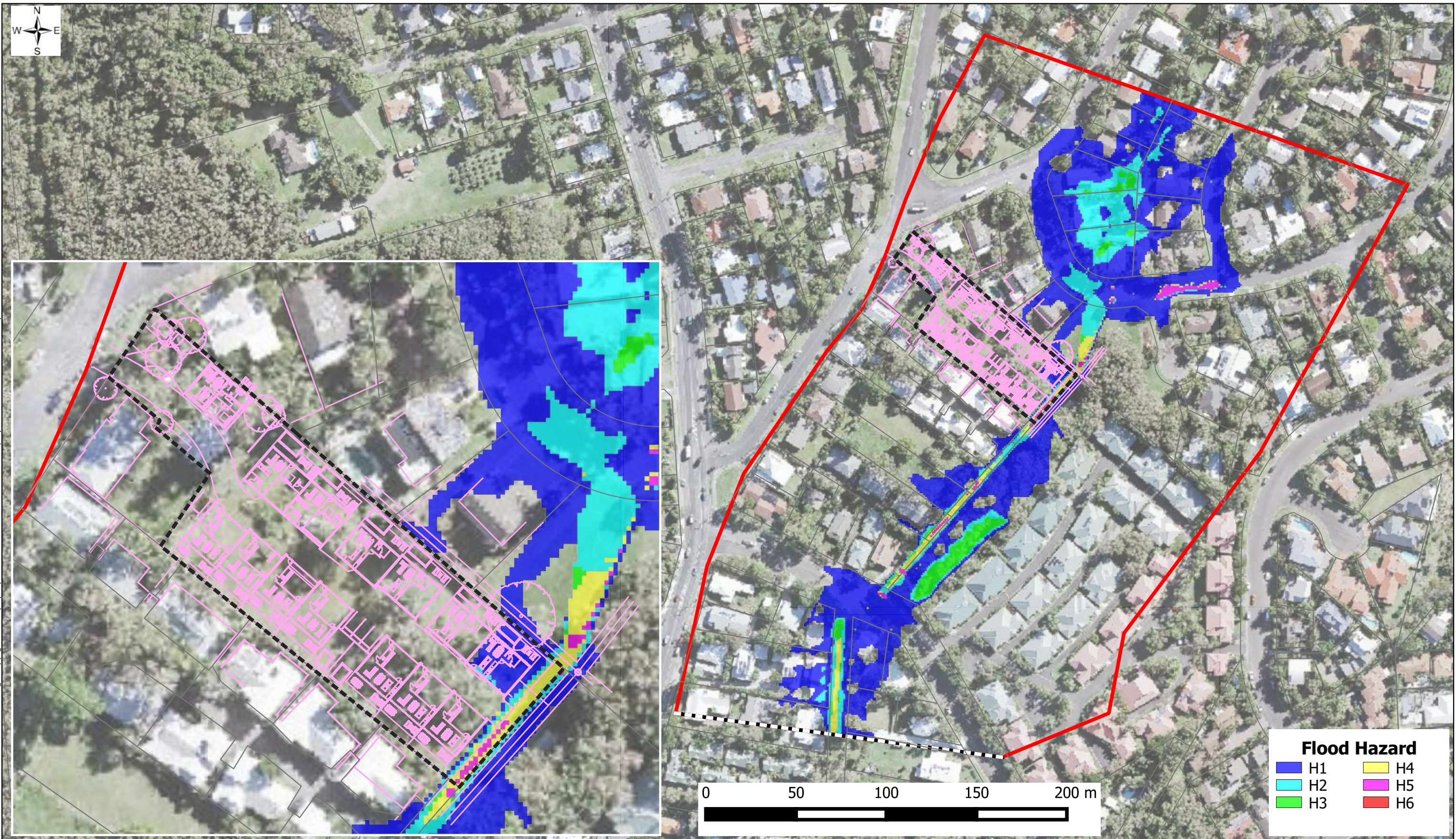
**Legend**

- Model Extent Site  
 Cadastral Downstream Boundary

**DISCLAIMER:** This figure and its contents are electronically generated, are confidential and may only be used for the purpose for which they were intended. Flood Works will not accept responsibility for any consequences arising from the use of the figure for other than its intended purpose or where the drawing has been altered, amended or changed either manually or electronically by any third party.



COPYRIGHT © This drawing is copyright and the property of Flood Works. It must not be retained, copied or used without the authority of Flood Works.



**FIG B04 - POST-DEVELOPMENT  
1% AEP  
FLOOD WATER HAZARD**

PROJECTION: GDA94 / MGA ZONE 56  
PROJECT: 103 Patterson St Byron Bay  
DATE: Feb 2021

**Legend**

Model Extent	Downstream Boundary
Cadastral	Layout
Site	

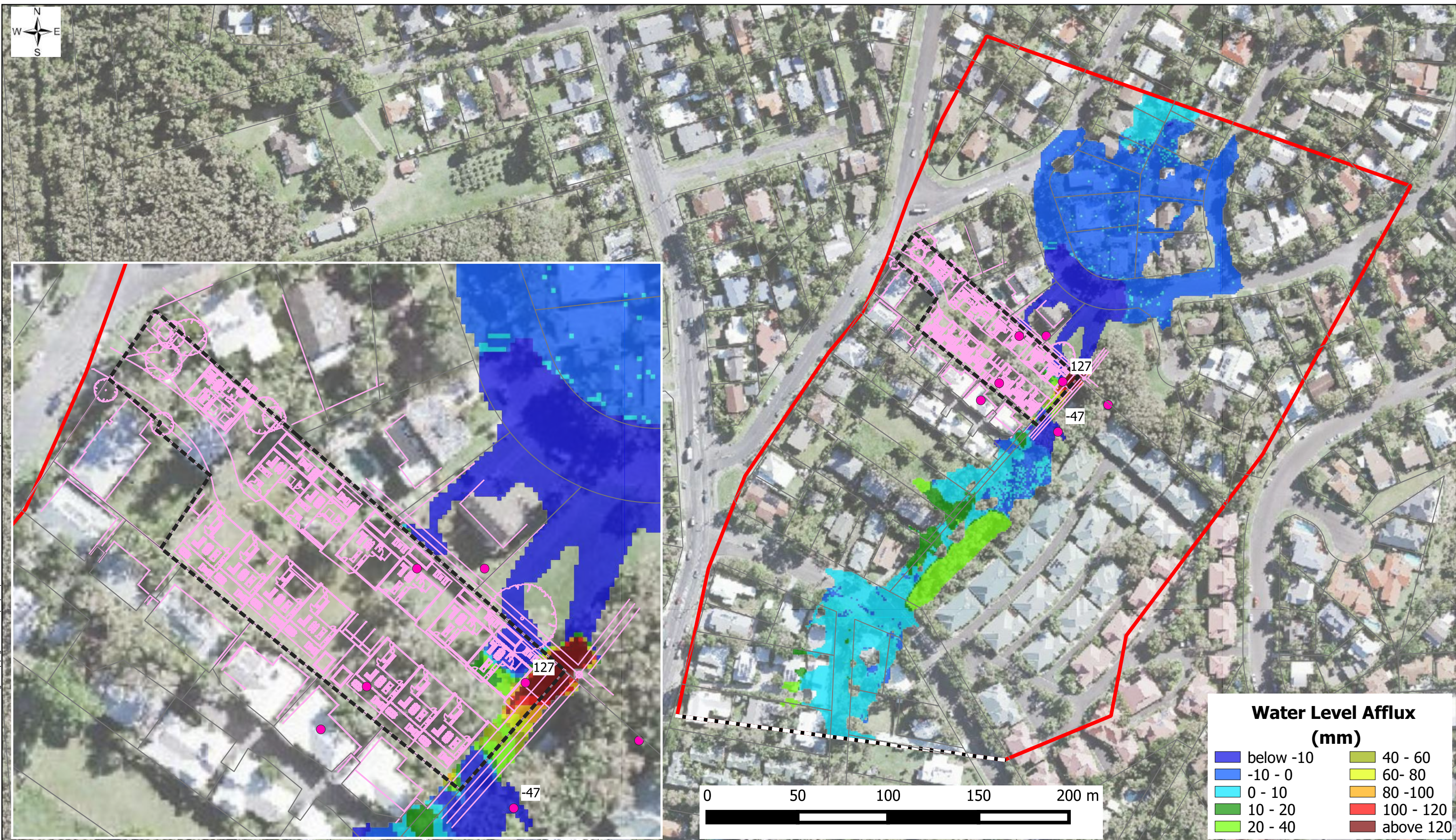
  
**FLOODWORKS**  
[www.floodworks.com.au](http://www.floodworks.com.au)

Client

**DISCLAIMER:** This figure and its contents are electronically generated, are confidential and may only be used for the purpose for which they were intended. Flood Works will not accept responsibility for any consequences arising from the use of the figure for other than its intended purpose or where the drawing has been altered, amended or changed either manually or electronically by any third party.



COPYRIGHT © This drawing is copyright and the property of Flood Works. It must not be retained, copied or used without the authority of Flood Works.



**FIG C01 - POST-DEVELOPMENT  
1% AEP  
FLOOD WATER LEVEL AFFLUX**

PROJECTION: GDA94 / MGA ZONE 56  
PROJECT: 103 Patterson St Byron Bay  
DATE: Feb 2021

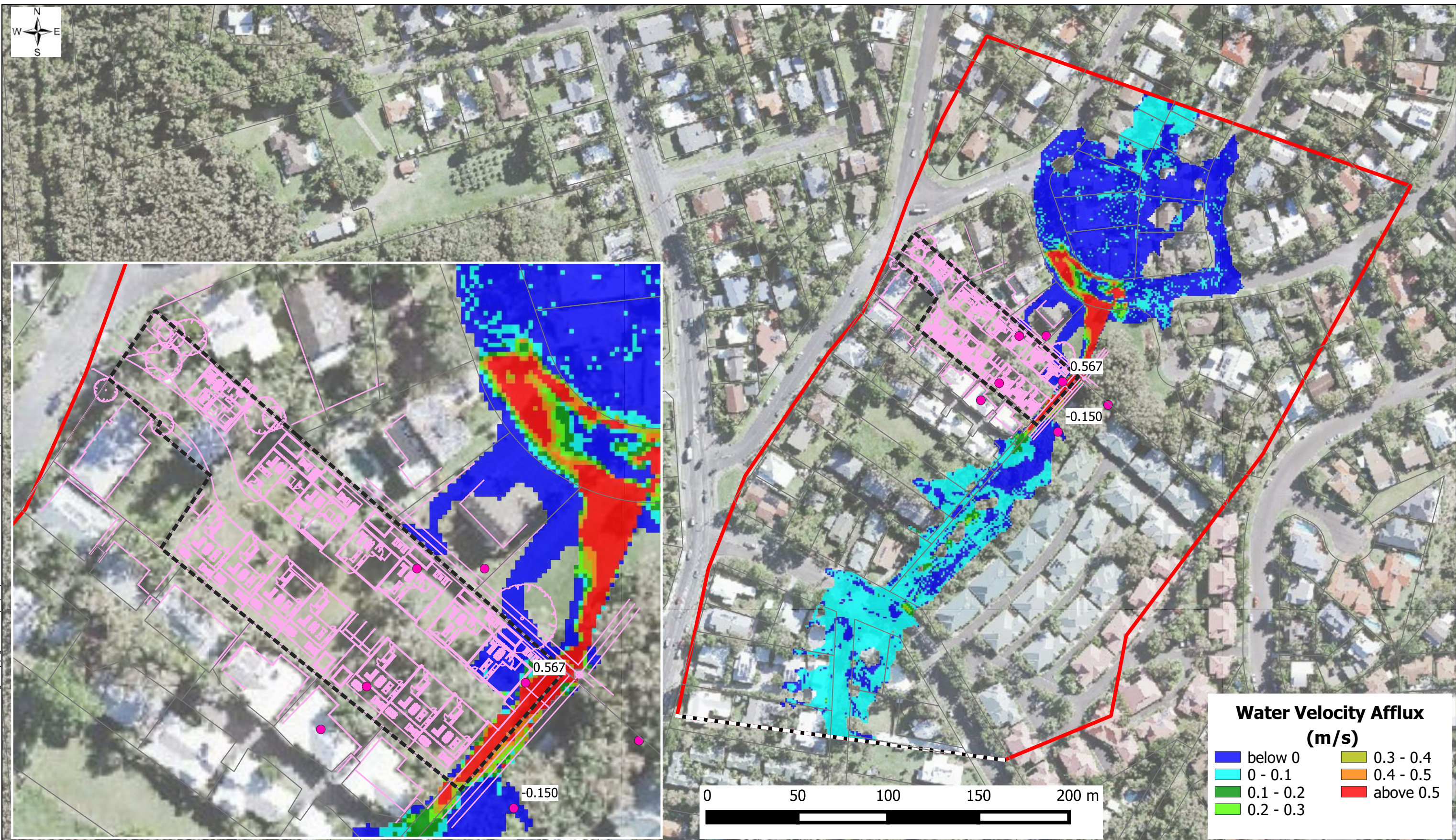
**Legend**

- |              |                     |
|--------------|---------------------|
| Model Extent | Downstream Boundary |
| Cadastral    | Interrogation Point |
| Site         | Layout              |

**DISCLAIMER:** This figure and its contents are electronically generated, are confidential and may only be used for the purpose for which they were intended. Flood Works will not accept responsibility for any consequences arising from the use of the figure for other than its intended purpose or where the drawing has been altered, amended or changed either manually or electronically by any third party.



COPYRIGHT © This drawing is copyright and the property of Flood Works. It must not be retained, copied or used without the authority of Flood Works.



**FIG C02 - POST-DEVELOPMENT  
1% AEP  
FLOOD WATER VELOCITY AFFLUX**

PROJECTION: GDA94 / MGA ZONE 56  
PROJECT: 103 Patterson St Byron Bay  
DATE: Feb 2021

**Legend**

- Model Extent
- Cadastral
- Site
- Downstream Boundary
- Interrogation Point
- Layout

**DISCLAIMER:** This figure and its contents are electronically generated, are confidential and may only be used for the purpose for which they were intended. Flood Works will not accept responsibility for any consequences arising from the use of the figure for other than its intended purpose or where the drawing has been altered, amended or changed either manually or electronically by any third party.